



TURLOCK MULTIBENEFIT LAND REPURPOSING PROGRAM (MLRP) Stakeholder Advisory Committee (SAC) Meeting

SAC MEETING #5

March 24, 2026

OUTLINE

- Introduction to the SAC
- Solicitation Process Overview
- Scoring Rubric
- Summary of Received Project Applications
- Feedback Solicitation Process
- Highest Scored MLRP Project Applications
- MLRP Projects Next Steps



GROUND RULES

REGLAS



- Be active and present in the space (i.e., silence phones).
 - Give everyone a chance to interact and make space for others to speak.
 - Be honest and open-minded.
 - Have respect for other participants.
 - Look for win-win opportunities.
 - Refrain from judging other's ideas.
 - Ask questions for clarification.
- Estar activo y presente en el espacio (es decir, silenciar los teléfonos).
 - Dar a todos la oportunidad de interactuar y hacer espacio para que otros hablen.
 - Sé honesto y de mente abierta.
 - Tener respeto por los demás participantes.
 - Buscar oportunidades en las que todos ganen.
 - Abstenerse de juzgar las ideas de otros.
 - Haga preguntas para obtener aclaraciones.

STAKEHOLDER ADVISORY COMMITTEE (SAC)

COMITÉ ASESOR DE PARTES INTERESADAS (SAC, POR SUS SIGLAS EN INGLÉS)



Purpose

A group of diverse stakeholders to ensure local needs and desired outcomes are being considered.

Propósito

Un grupo de diversas partes interesadas para garantizar que se consideren las necesidades locales y los resultados deseados.

Roles

To guide the development of the Multibenefit Agricultural Land Repurposing Plan (MALRP) and provide feedback on potential projects.

Funciones

Guiar el desarrollo y la implementación del Plan de Reutilización de Tierras Agrícolas de Beneficios Múltiples (MALRP) y dar comentarios sobre proyectos potenciales.

Commitment

Quarterly meetings, or as needed, until the end of the grant period (March 2027).

Compromiso

Reuniones trimestrales, o según sea necesario, hasta el final del período de la subvención (marzo de 2027).

SOLICITATION PROCESS OVERVIEW

- Solicitation Period: **1/1/26-3/4/26**
 - Extended the deadline from 2/28 to 3/4
- MLRP Applications Received: **20**
- Provision of Technical Assistance: **12 requests fielded**
- Technical Assistance Fairs
 - TA Fair #1 on January 14
 - TA Fair #2 on February 11



MLRP APPLICATION – PROCESS, ROLES, TIMELINE

■ Process & Roles:

■ Applicant:

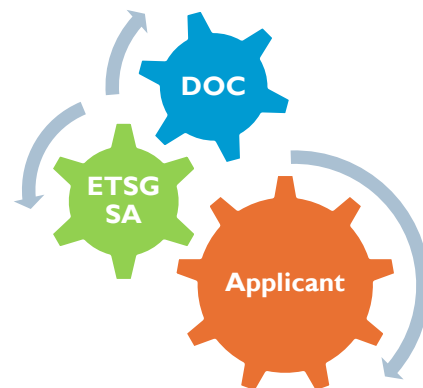
- Develop project ideas, plan, and cost estimate
- Seek Technical Assistance, if needed
- Submit complete application by deadline

■ ETSGSA:

- Provide Technical Assistance
- **Score applications w/ SAC input** -> initial project selections approved by Board
- Submit projects to DOC
- Permitting and CEQA support

■ DOC:

- Final project review/approval



■ Timeline:

■ Solicitation Period:

Jan 1 – Mar 4, 2026

■ Application Scoring & Initial Project Selection: **March/April**

■ Baseline Documentation, DOC Packet Preparation: **April/May**

■ Agreement execution (after DOC approval): **May/June**

■ Implementation complete & invoices due: **Dec 31, 2026**

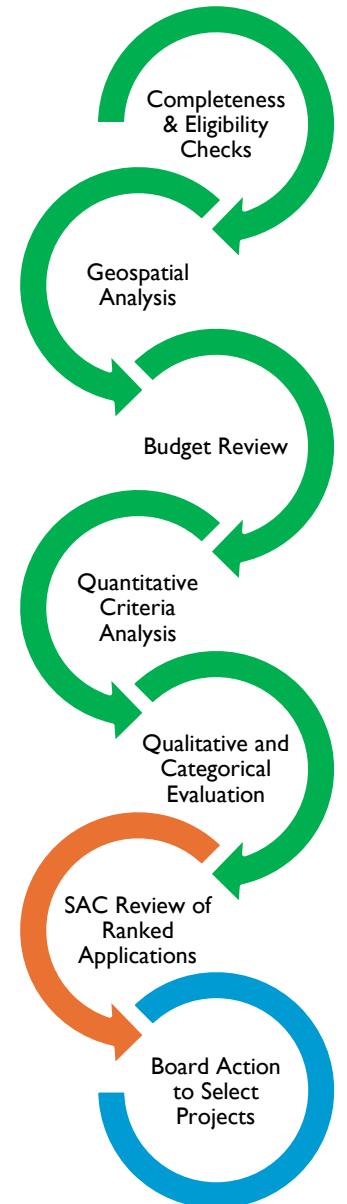
■ DOC grant close: **Mar 31, 2027** (final payments released by DOC)

APPLICATION SCORING PROCESS

1. **GSA Staff** completes Initial Checks and Follow-up with Applicant (as needed)
2. **GSA Staff** conducts Application Scoring using Rubric
 - Quantitative, qualitative, and geospatial metrics
 - Ranking by total score
3. **SAC** meets to review and provide input on list of ranked applications
4. **GSA Staff** provides Recommendation to **ETSGSA Board**



ETSGSA Board provides final approval for projects to submit to DOC for funding approval



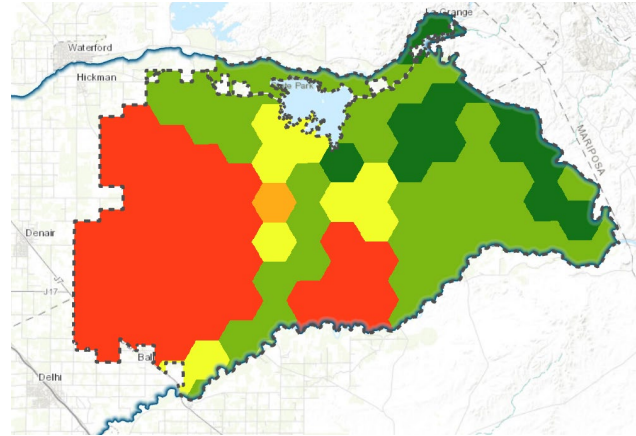
SCORING RUBRIC

Category	Category Weight	Sub-criteria	Sub-criteria Weight	Type
Groundwater Sustainability Benefits	45%	Cost-Effectiveness of Water Savings (\$/AF)	20.0%	Quantitative
		Location relative to GW Level Decline PAA (none currently)	10.0%	Geospatial
		Location relative to Subsidence PAA	10.0%	Geospatial
		Leverages Available Surface Water Supplies	5.0%	Qualitative
Ecological and Hydrologic Benefits	20%	% of Project Area devoted to Habitat Improvement Practices	5.0%	Quantitative
		Benefits to Habitat Connectivity	5.0%	Geospatial
		Multibenefit pond, basin, or floodplain	5.0%	Qualitative
		Soil, Climate, Flood Hydrology or Other Ecological Benefits	5.0%	Qualitative
Community and Economic Benefits	20%	Location relative to DAC	5.0%	Geospatial
		Location Relative to Historically Dry or At-Risk Wells	5.0%	Geospatial
		Use of Local Businesses / Workforce Development	3.0%	Qualitative
		Community Outreach / Educational Component	3.0%	Qualitative
		Other Community Benefits	4.0%	Qualitative
Feasibility and Replicability	15%	Permitting Ease / Readiness	5.0%	Qualitative
		Construction Readiness	4.0%	Qualitative
		Scalability / Expansion Opportunity	3.0%	Qualitative
		Other Feasibility Factors	3.0%	Qualitative

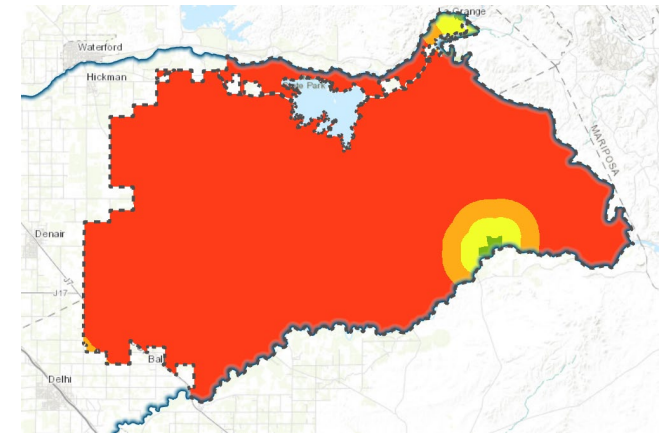
Each sub-criteria has three levels (High / Medium / Low, or similar) with relative ratings of 100% / 50% / 0%

Maximum Total Score = 100

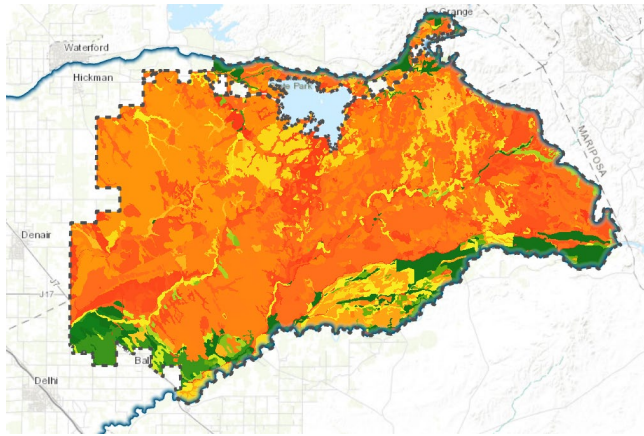
GEOSPATIAL DATA LAYERS USED IN PROJECT SCORING



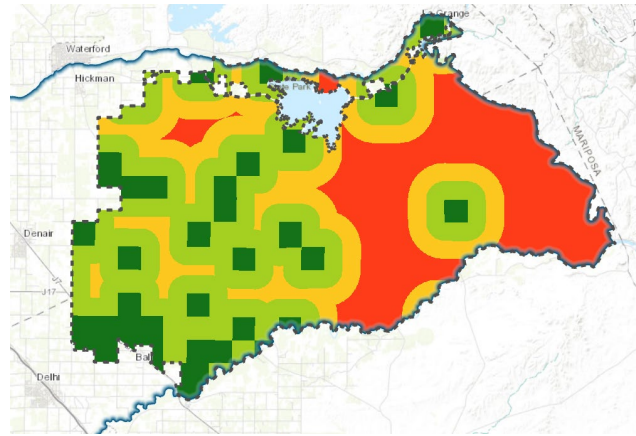
Habitat Connectivity



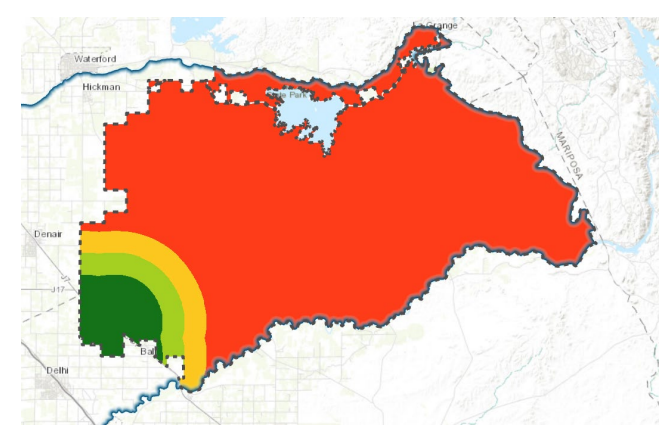
Proximity to DAC Places



Soil Hydraulic Conductivity

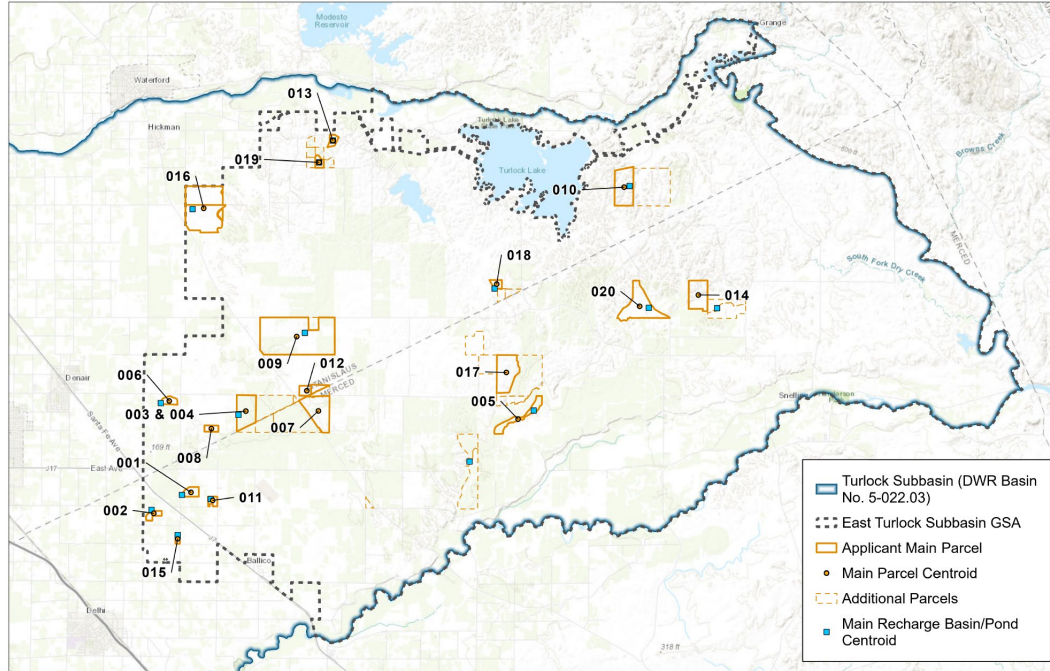


Proximity to At-Risk Wells



Subsidence Priority Action Area

SUMMARY OF THE 20 APPLICATIONS RECEIVED



MLRP Project Types	Quantity
Extended Multibenefit Fallowing	~750 acres
Stormwater Ponds	~100 acres
Constructed Basins	~230 acres
Orchard Swale Rewilding	~110 acres
Floodplain Reconnection	~20 acres
Floodflow Spreading	~40 acres

Total Score	GW Sustainability Relative Score	Ecological and Hydrologic Benefits Relative Score	Community and Economic Benefits Relative Score	Feasibility and Replicability Relative Score
56	78%	13%	40%	70%
55	56%	75%	50%	33%
49.5	67%	25%	13%	80%
49	56%	50%	38%	43%
48	56%	75%	25%	20%
47.5	56%	63%	20%	40%
46.5	56%	63%	30%	20%
45.5	67%	13%	35%	40%
45	56%	50%	30%	27%
45	56%	38%	13%	67%
43.5	50%	25%	13%	90%
39.5	22%	38%	43%	90%
37	33%	13%	23%	100%
36	0%	63%	50%	90%
34.5	22%	25%	23%	100%
34	50%	38%	8%	17%
32	22%	13%	23%	100%
32	11%	38%	35%	83%
31.5	22%	13%	20%	100%
30.5	22%	13%	23%	90%
30.5	0%	50%	28%	100%
27	28%	25%	23%	33%
27	6%	38%	38%	63%
26	11%	63%	28%	20%
25.5	0%	38%	23%	90%
25	6%	63%	30%	27%
24	6%	63%	23%	30%
21	6%	38%	30%	33%
20.5	6%	63%	20%	10%

FEEDBACK SOLICITATION PROCESS

- Spend 5-10 minutes on each high scored project
- GSA staff will provide an overview of the project, including scores and expected benefits, and answer any questions
- Participants will provide written feedback on the feedback form
 - Project applicants, please do not provide feedback/ratings on your own projects
 - Please turn in your feedback form at the end of the meeting

ETSGSA MLRP Project Feedback Form
Please provide feedback on the proposed project
& rate the project 1 to 5 stars (5 indicating you'd like to see the project move forward)

Project: 017 ☆☆☆☆☆

Project: 015 ☆☆☆☆☆

Project: 006 ☆☆☆☆☆

HIGHEST SCORED MLRP PROJECT APPLICATIONS

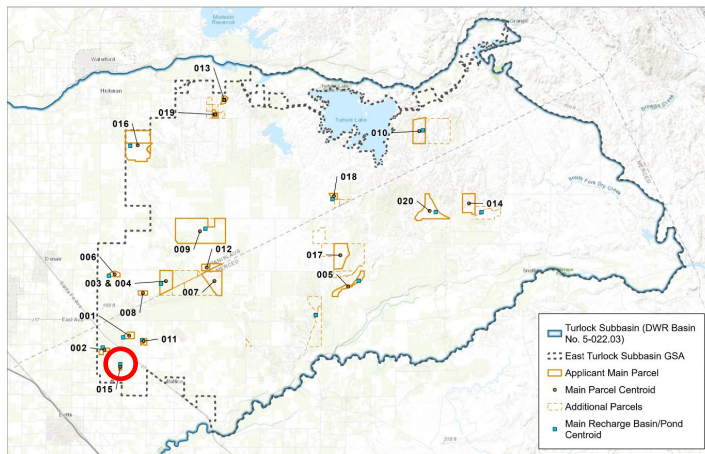
Basin Projects				
Score	Project ID	Project Type	Approximate Incentive Payments	Total Estimated Benefit to Basin over 10 years (AF)
56	015	Constructed Basin	\$620,000	17,400
55	017	Constructed Basin	\$600,000	10,400
49.5	006	Constructed Basin	\$70,000	600
49	009	Constructed Basin	\$720,000	10,600
48	005	Floodwater Basin	\$250,000	2,500

Non-Basin Projects				
Score	Project ID	Project Type	Approximate Incentive Payments	Total Estimated Benefit to Basin over 10 years (AF)
45	001	Stormwater pond	\$110,000	300
43.5	013	Extended MLRP Following	\$280,000	1,300
37	008	Extended MLRP Following	\$360,000	900
34.5	019	Extended MLRP Following	\$980,000	2,500

- Projects with constructed basins generally scored the highest
- However, to maintain diversity in project types (an MLRP goal) and to allow for access to grant funds by applicants who may not be able to do a basin project, the total amount of grant funds available was divided into:
 - Approx. \$2.5 million for Basin Projects
 - Approx. \$1.5 million for Non-Basin Projects

Two alternate Basin Projects and Two alternate Non-Basin Projects have also been identified

PROJECT 015



Land Repurposing Practices and/or Infrastructure

Recharge Basin: 5 acres, 49 AF capacity
 General Earthwork: 82,000 cu yd

Groundwater Sustainability Benefit to GSA:
17,400 AF (over 10 years)

Project Cost to GSA (Incentive Payments)

Type 1 (Operations & Maintenance)	\$52,500
Type 2 (Construction)	\$568,000
Total	\$620,500

Preliminary Project Score

56 / 100

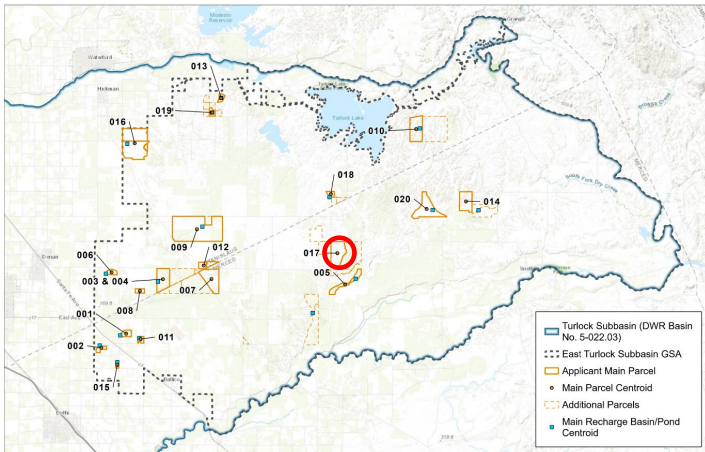
Groundwater Sustainability Benefits	78% of max
Ecological and Hydrologic Benefits	13% of max
Community and Economic Benefits	40% of max
Feasibility and Replicability	70% of max

Key Scoring Factors*

- Cost Effectiveness of Water Savings -
- Located in Subsidence PAA -
- Leverages Available Surface Water Supplies -
- Close Proximity to Historically Dry or At-Risk Wells -
- Proposed Use of Local Businesses -
- High Permitting Readiness -
- High Construction Readiness

* **Key Scoring Factors** are those for which the Project scored a “High” rating

PROJECT 017



Land Repurposing Practices and/or Infrastructure

Recharge Basin: 9 acres, 45 AF capacity
 General Earthwork: 72,000 cu yd

Groundwater Sustainability Benefit to GSA:

10,400 AF (over 10 years)

Project Cost to GSA (Incentive Payments)

Type 1 (Operations & Maintenance)	\$94,500
Type 2 (Construction)	\$509,400
Total	\$603,900

Preliminary Project Score

55 / 100

Groundwater Sustainability Benefits	56% of max
Ecological and Hydrologic Benefits	75% of max
Community and Economic Benefits	50% of max
Feasibility and Replicability	33% of max

Key Scoring Factors*

- Cost Effectiveness of Water Savings -
- Leverages Available Surface Water Supplies -
- Benefits to Habitat Connectivity -
- Multibenefit Basin -
- Soil, Climate, Flood, Benefits -
- Close Proximity to Historically Dry or At-Risk Wells

* Key Scoring Factors are those for which the Project scored a "High" rating

PROJECT 006



Land Repurposing Practices and/or Infrastructure

Recharge Basin: 1 acres, 7.5 AF capacity
 Pipeline and trenching, flow meter

Groundwater Sustainability Benefit to GSA:

570 AF (over 10 years)

Project Cost to GSA (Incentive Payments)

Type 1 (Operations & Maintenance)	\$10,500
Type 2 (Construction)	\$57,000
Total	\$67,500

Preliminary Project Score

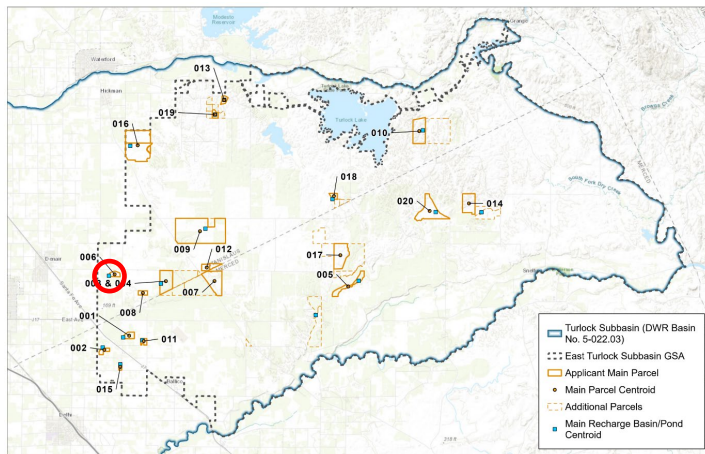
49.5 / 100

Groundwater Sustainability Benefits	67% of max
Ecological and Hydrologic Benefits	25% of max
Community and Economic Benefits	13% of max
Feasibility and Replicability	80% of max

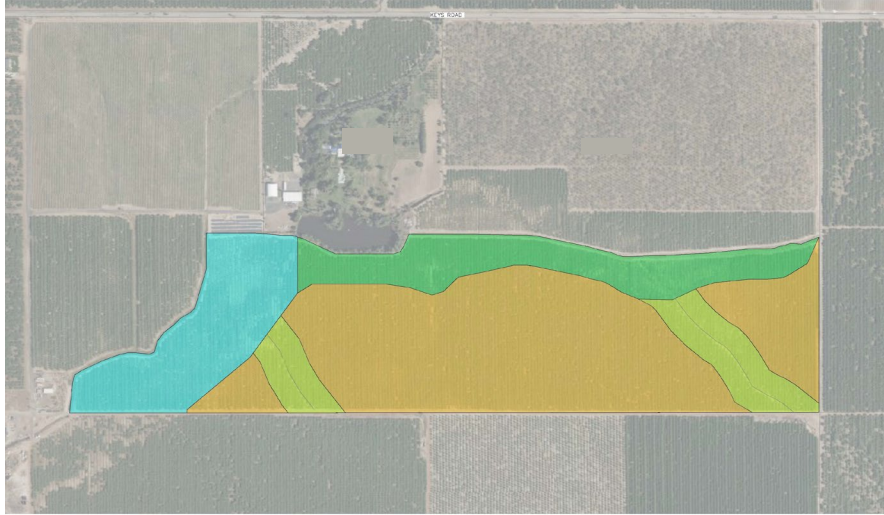
Key Scoring Factors*

- Cost Effectiveness of Water Savings -
- Leverages Available Surface Water Supplies -
- Multibenefit Basin -
- Soil, Climate, Flood, Benefits -
- Close Proximity to Historically Dry or At-Risk Wells -
- High Permitting Readiness -
- High Construction Readiness

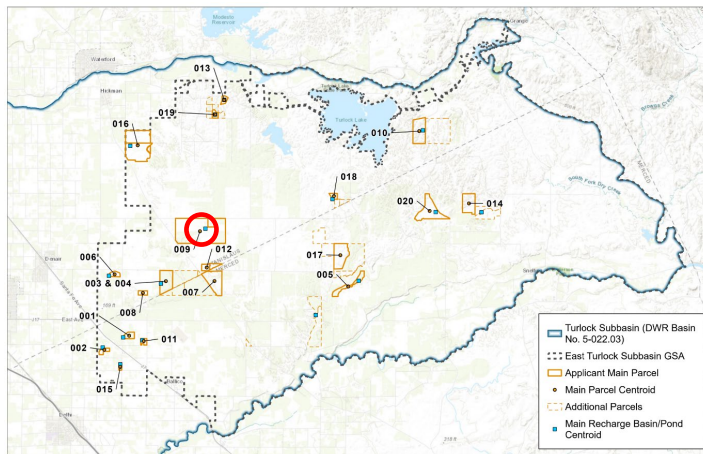
* **Key Scoring Factors** are those for which the Project scored a “High” rating



PROJECT 009



- 420 ACRES - RECHARGE BASIN
- 418 ACRES - FLOODPLAIN SPREADING
- 412 ACRES - ORCHARD SINGLE ROWLING
- 463 ACRES - ROTATIONAL, EXTENDED FALLOWING



Land Repurposing Practices and/or Infrastructure

Recharge Basin: 20 acres, 75 AF capacity
 General Earthwork: 5,000 cu yd
 Pipeline, outlet structure, flow meter

Groundwater Sustainability Benefit to GSA:

10,600 AF (over 10 years)

Project Cost to GSA (Incentive Payments)

Type 1 (Operations & Maintenance)	\$210,000
Type 2 (Construction)	\$506,000
Total	\$716,000

Preliminary Project Score

49 / 100

Groundwater Sustainability Benefits	56% of max
Ecological and Hydrologic Benefits	50% of max
Community and Economic Benefits	38% of max
Feasibility and Replicability	43% of max

Key Scoring Factors*

- Cost Effectiveness of Water Savings
-
- Leverages Available Surface Water Supplies
-
- Multibenefit Basin
-
- Soil, Climate, Flood, Benefits
-
- Other Feasibility Factors

* **Key Scoring Factors** are those for which the Project scored a "High" rating

PROJECT 005



Land Repurposing Practices and/or Infrastructure

Floodwater Pond/Basin: 18 acres
Valve and outlet pipe

Groundwater Sustainability Benefit to GSA:
2,500 AF (over 10 years)

Project Cost to GSA (Incentive Payments)

Type 1 (Operations & Maintenance)	\$173,600
Type 2 (Construction)	\$73,700
Total	\$247,300

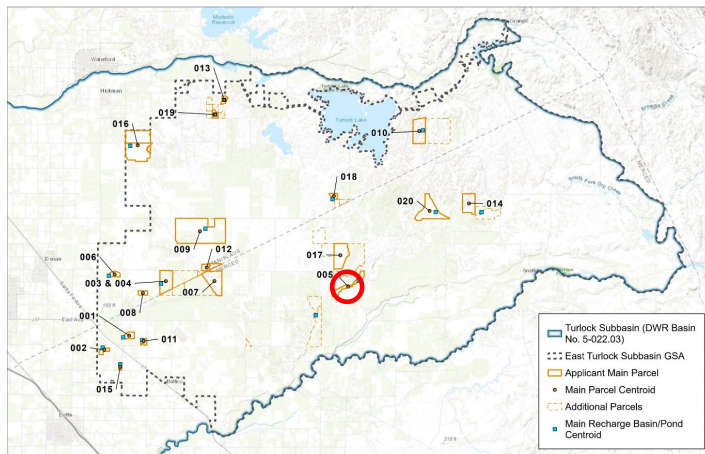
Preliminary Project Score

48 / 100

Groundwater Sustainability Benefits	56% of max
Ecological and Hydrologic Benefits	75% of max
Community and Economic Benefits	25% of max
Feasibility and Replicability	20% of max

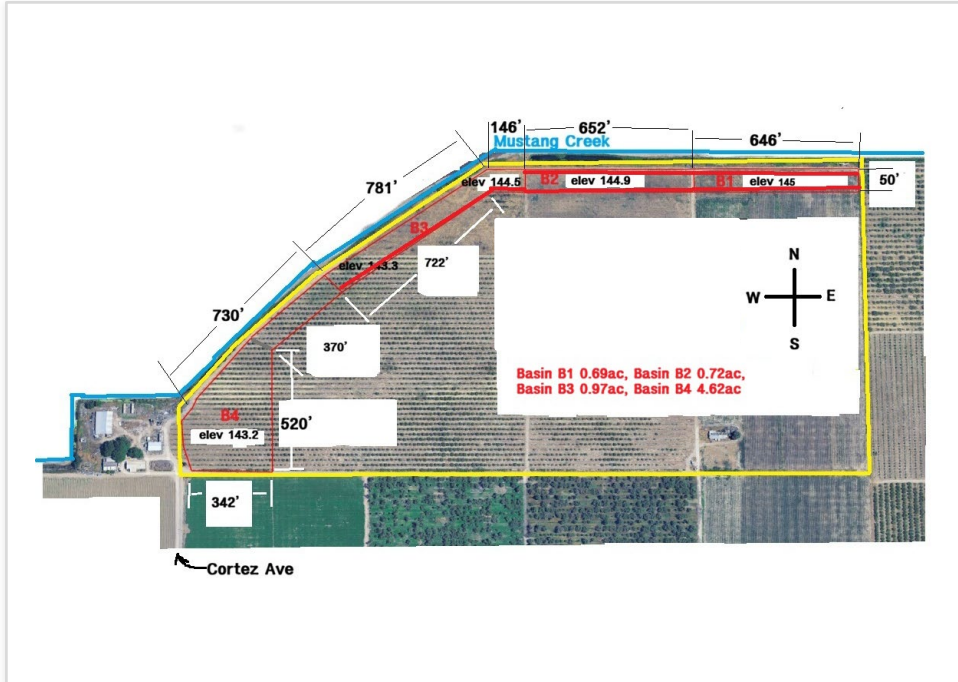
Key Scoring Factors*

- Cost Effectiveness of Water Savings
-
- Leverages Available Surface Water Supplies
-
- Multibenefit Basin
-
- Soil, Climate, Flood, Benefits
-
- Other Feasibility Factors



* **Key Scoring Factors** are those for which the Project scored a “High” rating

PROJECT 001



Land Repurposing Practices and/or Infrastructure

Stormwater Ponds: 7 acres
3,200 ft of Ranch Road

Groundwater Sustainability Benefit to GSA:
300 AF (over 10 years)

Project Cost to GSA (Incentive Payments)

Type 1 (Operations & Maintenance)	\$67,900
Type 2 (Construction)	\$46,700
Total	\$114,600

Preliminary Project Score

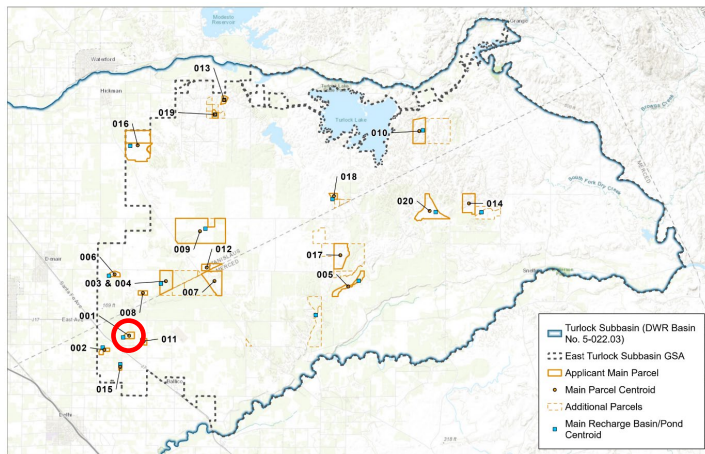
45 / 100

Groundwater Sustainability Benefits	56% of max
Ecological and Hydrologic Benefits	38% of max
Community and Economic Benefits	13% of max
Feasibility and Replicability	67% of max

Key Scoring Factors*

- Located in Subsidence PAA
-
- Multibenefit Basin
-
- Permitting Ease/Readiness

* **Key Scoring Factors** are those for which the Project scored a “High” rating



PROJECT 013



Land Repurposing Practices and/or Infrastructure

Extended MLRP Fallowing: 30 acres
 Recharge Basin (existing): 1.4 acres

Groundwater Sustainability Benefit to GSA:
1,300 AF (over 10 years)

Project Cost to GSA (Incentive Payments)

Type 1 (Operations & Maintenance)	\$279,000
Type 2 (Construction)	\$0
Total	\$279,000

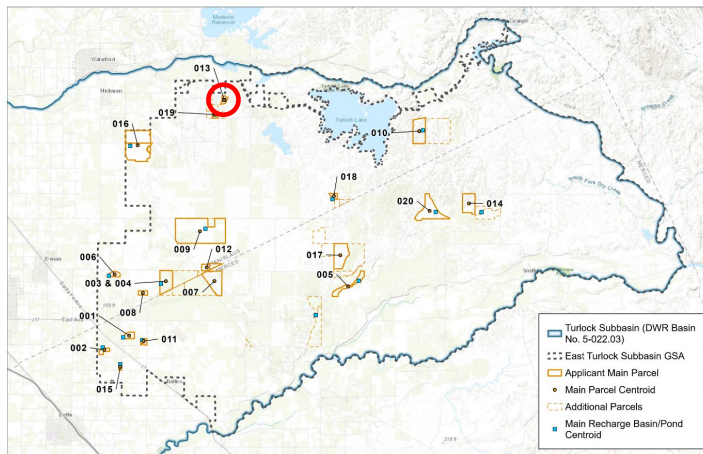
Preliminary Project Score

43.5 / 100

Groundwater Sustainability Benefits	50% of max
Ecological and Hydrologic Benefits	25% of max
Community and Economic Benefits	13% of max
Feasibility and Replicability	90% of max

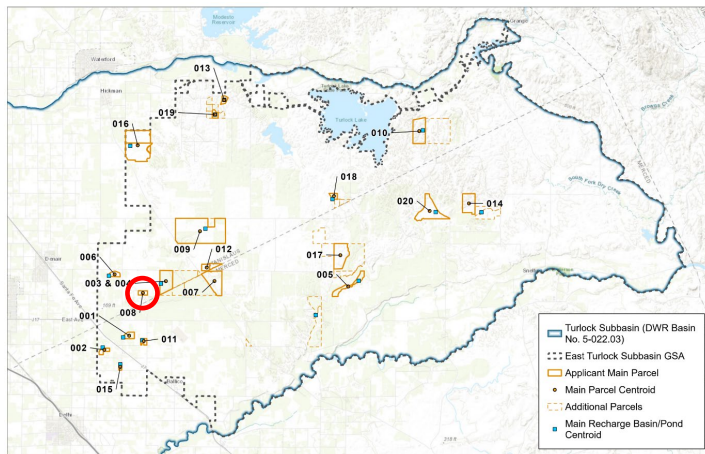
Key Scoring Factors*

- Cost Effectiveness of Water Savings -
- Benefits to Habitat Connectivity -
- Permitting Ease/Readiness -
- Construction Readiness -
- Scalability / Expansion Opportunity



* **Key Scoring Factors** are those for which the Project scored a “High” rating

PROJECT 008



Land Repurposing Practices and/or Infrastructure

Extended MLRP Following: 40 acres

Groundwater Sustainability Benefit to GSA:

900 AF (over 10 years)

Project Cost to GSA (Incentive Payments)

Type 1 (Operations & Maintenance)	\$360,000
Type 2 (Construction)	\$0
Total	\$360,000

Preliminary Project Score

37 / 100

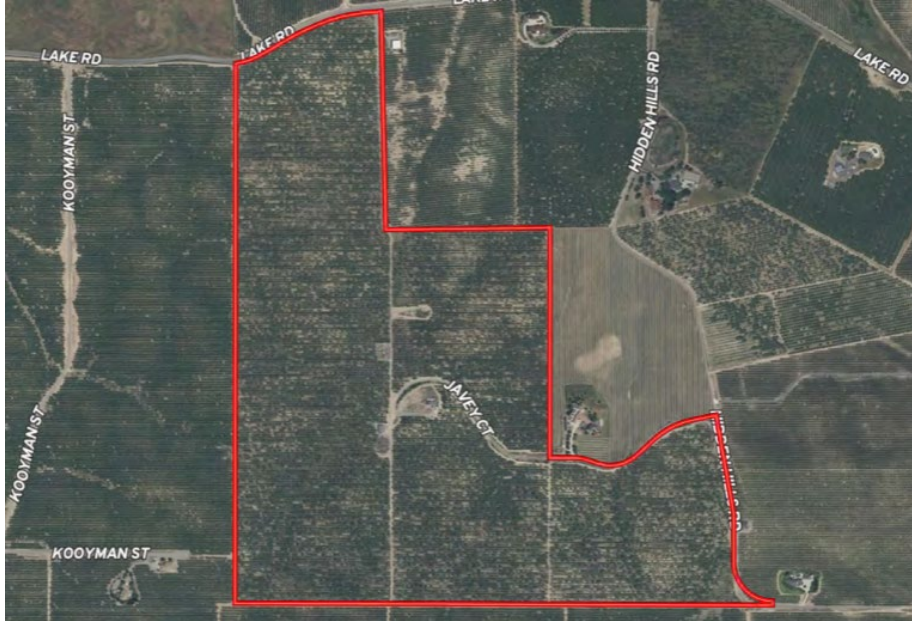
Groundwater Sustainability Benefits	33% of max
Ecological and Hydrologic Benefits	13% of max
Community and Economic Benefits	23% of max
Feasibility and Replicability	100% of max

Key Scoring Factors*

- Permitting Ease/Readiness -
- Construction Readiness -
- Scalability / Expansion Opportunity -
- Other Feasibility Factors

* **Key Scoring Factors** are those for which the Project scored a “High” rating

PROJECT 019



Land Repurposing Practices and/or Infrastructure

Extended MLRP Following: 110 acres

Groundwater Sustainability Benefit to GSA:
2,500 AF (over 10 years)

Project Cost to GSA (Incentive Payments)

Type 1 (Operations & Maintenance)	\$980,000
Type 2 (Construction)	\$0
Total	\$980,000

Preliminary Project Score

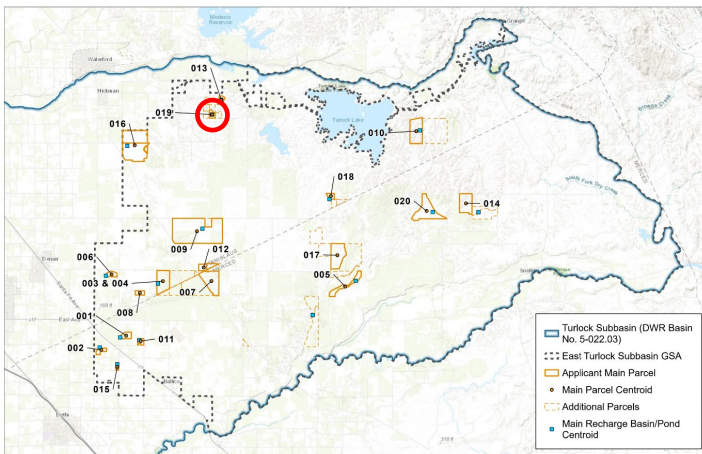
34.5 / 100

Groundwater Sustainability Benefits	22% of max
Ecological and Hydrologic Benefits	25% of max
Community and Economic Benefits	23% of max
Feasibility and Replicability	100% of max

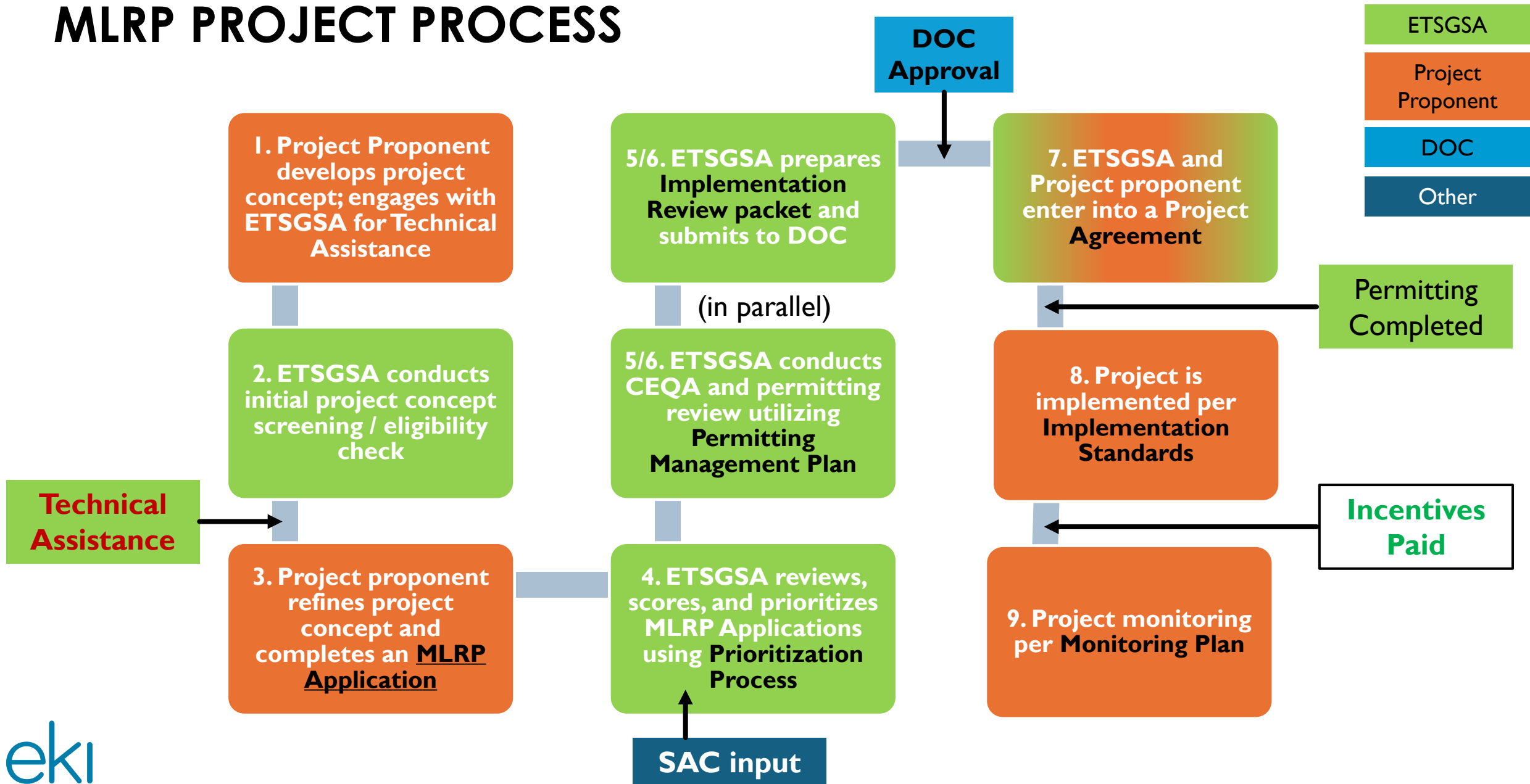
Key Scoring Factors*

- Benefits to Habitat Connectivity -
- Permitting Ease/Readiness -
- Construction Readiness -
- Scalability / Expansion Opportunity -
- Other Feasibility Factors -

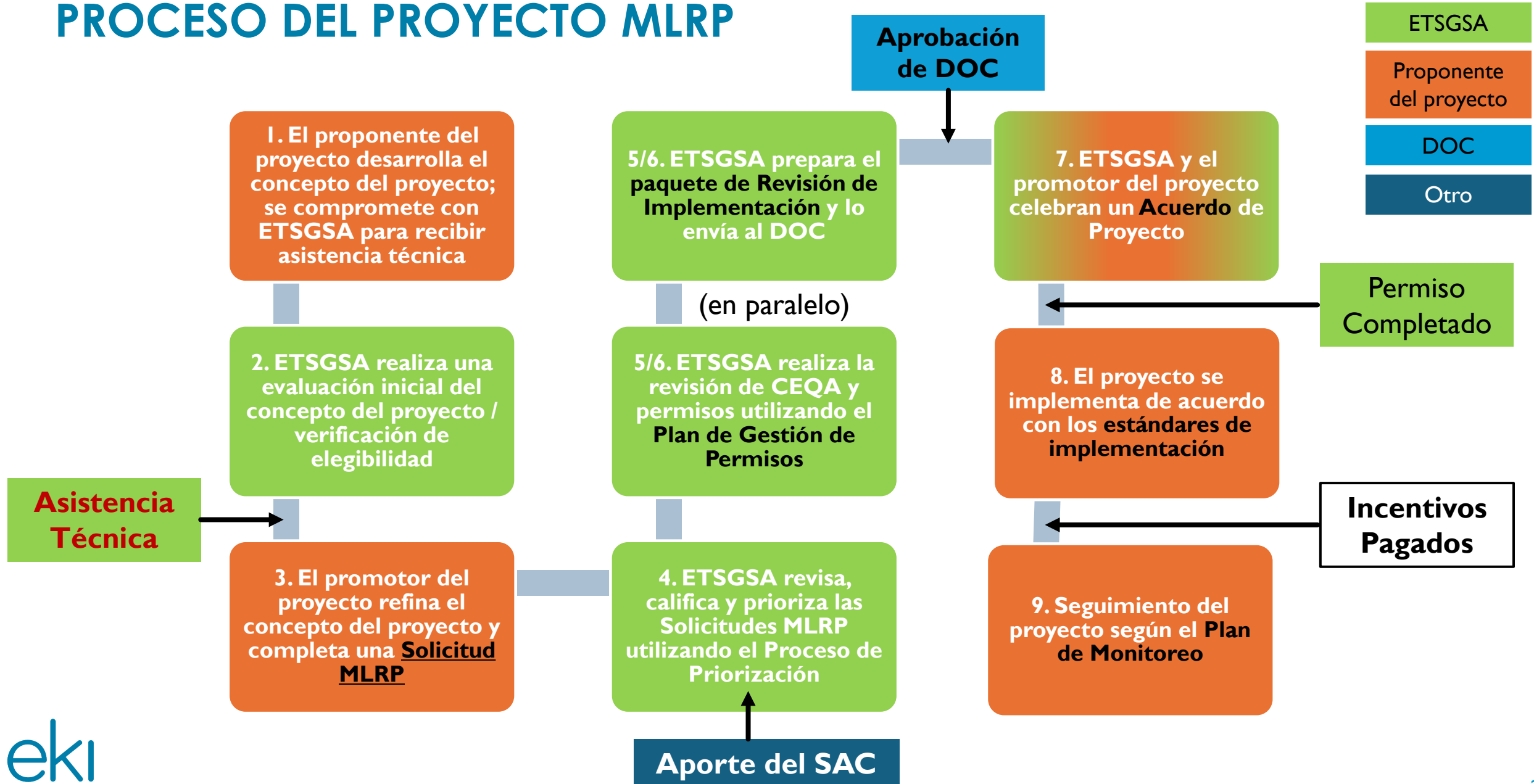
* **Key Scoring Factors** are those for which the Project scored a “High” rating



MLRP PROJECT PROCESS



PROCESO DEL PROYECTO MLRP



QUESTIONS

If you have any questions or would like more information about the Turlock MLRP please contact ETSGSA

Email: etsgsa-support@formationenv.com

Phone: (209) 407-1233